

Health and Wellness

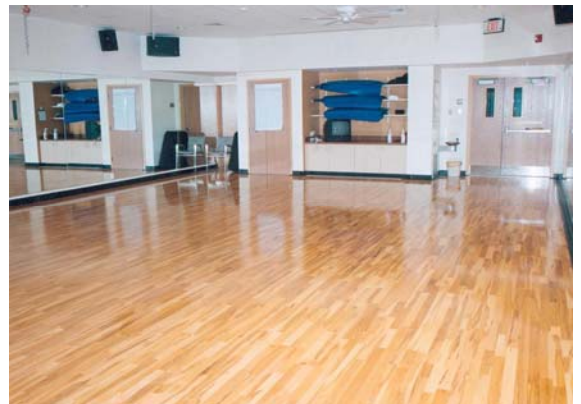


Health and Wellness - Lexington, MA 2000

Owner: MIT Lincoln Laboratory
Architect: Bechtel Frank Erickson Architects
R.C. Griffin, Inc.: General Contractor

Project Summary

The project was a 3,000 sf addition and a 12,000 sf renovation of an existing facility. The Health and Wellness Center consisted of a full cardiovascular/Nautilus and free weight area, a multi-purpose room, men's and women's locker rooms, laundry, snack bar, and administration offices. The project also included a medical assistance area, complete with exam room, doctor's office, and reception area.



R.C. Griffin, Inc.
General Contractors